

1924 Portland Tax Records: 14 Greenleaf Street, Portland, 1924

Portland, *N.R.* *1350* *138500* Maine
 Assessment 19
 Name *Mahoney Amanda a Electric*
 Owner *Kennay Annie*
 Street *Greenleaf* No. *14*
 Block *13 B* Lot *1*
 Use of Bldg. *Dwellings* Name _____
 Tenants and Rooms *2* *14 Rooms*
 Rentals *47.00 + Comm*
 Age *24*
 Condition of Repair *Fair*

- | | | |
|---------------------|-----------------|-----------------------|
| Class | Exterior | Plumbing |
| Bungalow | Clapboards | Common |
| Single House | Siding | Individual |
| Two family | Shingles | Open |
| Three family | Stucco | Set tubs |
| Apartment | Paper | Finish |
| Store Building | Tapestry Brick | Plain |
| Office " | Com. Brick | Hardwood |
| Factory " | Galv. Iron | Halls |
| Storage | Stone | Wood |
| Stables | Terra Cotta | Terrazzo |
| Garage, private | Concrete | Marble |
| Garage, public | | Roof - Roofing |
| Theatre | Heating | Shingle |
| Club House | Stove | Slate |
| Cottage | Furnace | Gravel |
| | Hot Water | Prepared |
| Foundation | Steam | Asbestos |
| Brick | Light | Fiat |
| Stone | Oil | Hip |
| Concrete | Gas | Gable |
| Pile | Electric | Dormers |
| Basement | | Windows |
| Full | Floor | Plain Glass |
| Cement Floor | Common | Wire Glass |
| Waterproof | Hardwood | Shutters |
| Construction | Re-Concrete | Miscellaneous |
| Frame | Concrete Slab | Elevator |
| Brick | Waterproof | Sprinkler |
| Tile | Ceiling | Fire Escape |
| Blocks | Plaster | Refrigerator |
| Stucco | Metal | Vacuum Cleaner |
| Re-Concrete | Panelled | Safes and Vaults |
| Mill | Rough | Telephone Equip. |
| Steel Frame | | |

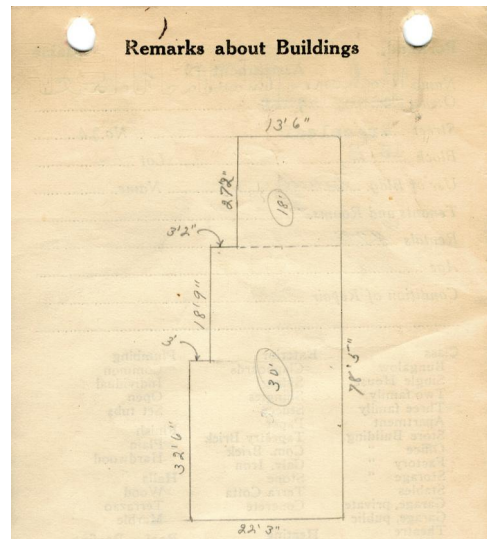
Ground Area *1402.47* Height *30'-18"*
 Cubic Feet *37673* Unit *16* cts.
 Utility Dep. _____
 Dep. *55* Per cent.
 Sound Value, \$ *2712*
3500
4000 - 1924 *2150*
2640 *32*
 Land *2750* Corner _____ Interior _____ Alley _____
 Front _____ Depth _____ = _____ ft.

COMPUTATION

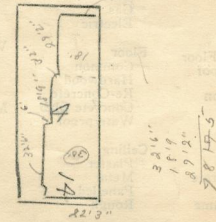
Area	Multiplier	Coefficient	
<i>2640</i>	<i>104</i>	<i>2651</i>	
<i>2640</i>	<i>104</i>	<i>2670</i>	
Year	Unit	Coefficient	Land Value
<i>19</i>	<i>08</i>	<i>257</i>	<i>228</i>
		<i>2770</i>	<i>257</i>



Surveyed by *M. Mahoney*
 (Remarks on other Side)
24 *1131-344* *2500-3000*



Remarks about Land



GREENLEAF ST

7723.12
312.56
1035.68 x 30 = 31070.40
366.79 x 18 = 6602.22
1402.47 *37672.62*

Remarks about Personal Property

<i>10.67</i>	<i>27.17</i>
<i>18.75</i>	<i>13.5</i>
<i>2335</i>	<i>13525</i>
<i>11069</i>	<i>2151</i>
<i>1336</i>	<i>2717</i>
<i>160</i>	<i>36</i>
<i>312</i>	<i>25</i>
<i>36079</i>	<i>325</i>
<i>2944</i>	<i>1450</i>
<i>36079</i>	<i>1450</i>
<i>660</i>	<i>2500</i>
<i>7</i>	<i>250</i>
<i>8</i>	<i>679</i>
<i>9</i>	<i>1000</i>
<i>10</i>	<i>1450</i>
<i>11</i>	<i>1450</i>
<i>12</i>	<i>1450</i>
<i>13</i>	<i>1450</i>
<i>14</i>	<i>1450</i>
<i>15</i>	<i>1450</i>
<i>16</i>	<i>1450</i>
<i>17</i>	<i>1450</i>
<i>18</i>	<i>1450</i>
<i>19</i>	<i>1450</i>
<i>20</i>	<i>1450</i>
<i>21</i>	<i>1450</i>
<i>22</i>	<i>1450</i>
<i>23</i>	<i>1450</i>
<i>24</i>	<i>1450</i>
<i>25</i>	<i>1450</i>
<i>26</i>	<i>1450</i>
<i>27</i>	<i>1450</i>
<i>28</i>	<i>1450</i>
<i>29</i>	<i>1450</i>
<i>30</i>	<i>1450</i>
<i>31</i>	<i>1450</i>
<i>32</i>	<i>1450</i>
<i>33</i>	<i>1450</i>
<i>34</i>	<i>1450</i>
<i>35</i>	<i>1450</i>
<i>36</i>	<i>1450</i>
<i>37</i>	<i>1450</i>
<i>38</i>	<i>1450</i>
<i>39</i>	<i>1450</i>
<i>40</i>	<i>1450</i>
<i>41</i>	<i>1450</i>
<i>42</i>	<i>1450</i>
<i>43</i>	<i>1450</i>
<i>44</i>	<i>1450</i>
<i>45</i>	<i>1450</i>
<i>46</i>	<i>1450</i>
<i>47</i>	<i>1450</i>
<i>48</i>	<i>1450</i>
<i>49</i>	<i>1450</i>
<i>50</i>	<i>1450</i>

31070.40
6602.22
37672.62 = TOTAL CA. FT.

1924 Portland Tax Records: 14 Greenleaf Street, Portland, 1924



Owner: Annie Kenney
Address: 14 Greenleaf Street, Bayside, Portland, Maine
Use: Dwelling - Three Family
Local Code: Block 13B Lot 4 Book 41 Page 1
MMN item number: 57037
Notes: The property was subsequently owned by Amanda & Electra C. Mahoney.