

1924 Portland Tax Records: 326 Commercial Street, Portland, 1924

13 300 ✓

Portland, Maine  
**Assessment 19**  
 Name Richardson Dana & Co  
 Owner Commercial (leased) No. 326  
 Street Commercial (leased)  
 Block 4 E Lot 2-A  
 Use of Bldg. Office Name \_\_\_\_\_  
 Tenants and Rooms \_\_\_\_\_  
 Rentals Owner  
 Age 12  
 Condition of Repair Good

<b>Class</b>	<b>Exterior</b>	<b>Plumbing</b>
Bungalow	Clapboards	Common
Single House	Siding	Individual
Two family	Shingles	Open
Three family	Stucco	Set tubs
Apartment	Paper	<b>Finish</b>
Store Building	Tapestry Brick	Plain
Office	Com. Brick	Hardwood ✓
Factory	Galv. Iron	<b>Halls</b>
Storage	Stone	Wood
Stables	Terra Cotta	Terrazzo
Garage, private	Concrete	Marble
Garage, public	<b>Heating</b>	<b>Roof — Roofing</b>
Theatre	Stove	Shingle
Club House	Furnace	Slate
Cottage	Hot Water	Gravel ✓
	Steam	Prepared
<b>Foundation</b>		Asbestos
Brick	<b>Light</b>	Flat ✓
Stone	Oil	Hip
Concrete	Gas	Gable
Pile	Electric	Dormers
<b>Basement</b>		<b>Windows</b>
Full	<b>Floor</b>	Plain Glass ✓
Cement Floor	Common	Wire Glass
Waterproof	Hardwood	Shutters
<b>Construction</b>	Re-Concrete	<b>Miscellaneous</b>
Frame	Concrete Slab	Elevator
Brick	Waterproof	Sprinkler
Tile	<b>Ceiling</b>	Fire Escape
Blocks	Plaster	Refrigerator
Stucco	Metal	Vacuum Cleaner
Re-Concrete	Panelled	Safes and Vaults
Mill	Rough	Telephone Equip.
Steel Frame		


Ground Area 70 44 Height 12  
 Cubic Feet 70 44 Unit 12 cts.  
 Utility Dep. 55 50 Per cent. 35 47  
 Dep. 65 Per cent. 35 47  
**Sound Value, \$** 475 <sup>350</sup>

Land Corner Interior Alley  
 Front Depth = 40 ft

COMPUTATION

Area	Multiplier	Coefficient

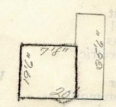
Year	Unit	Coefficient	Land Value
19			



Surveyed by Albert W. Waterman  
 JUN 9 1924  
 (Remarks on other Side) 2-13

**Remarks about Buildings**

**Remarks about Land**



COMMERCIAL ST.  
 $70.5 \times 40 = 390$   
 $16 \times 12.33 = 197$   
587  
 12

7044 Cu. Ft.

**Remarks about Personal Property**

Area	Multiplier	Coefficient

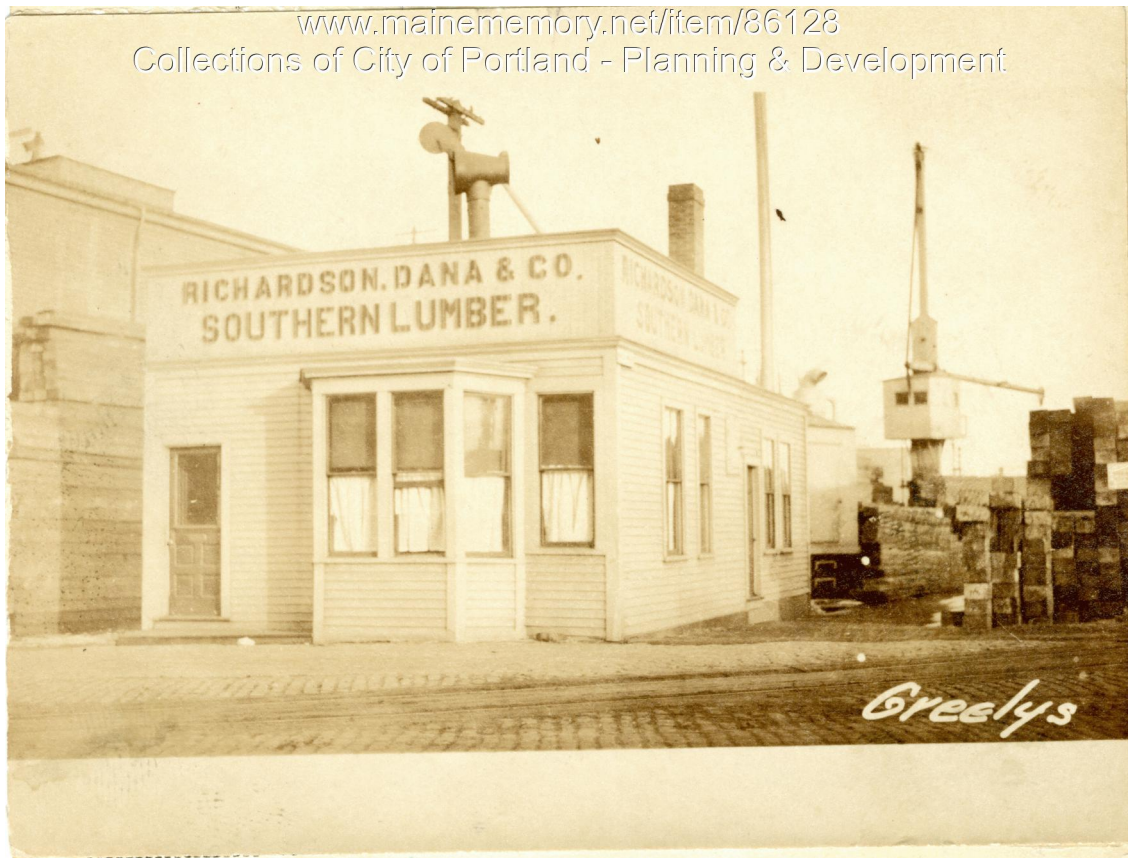
Year	Unit	Coefficient	Land Value
19			

CITY OF PORTLAND, MAINE  
 ASSESSORS DEPARTMENT

CHART	BLOCK
3	Building Volumes Checked <u>B.M.</u>
4	Building Values Placed <u>H.O.H.</u>
5	Building Values Extended
6	Land Cert. Questionnaire Made
7	Land Values Placed
8	Land Values Extended
9	Compared with 1923
10	Value of Property Added

1924 Portland Tax Records: 326 Commercial Street, Portland, 1924

[www.mainememory.net/Item/86128](http://www.mainememory.net/Item/86128)  
Collections of City of Portland - Planning & Development



**Owner:** Dana Richardson and Company  
**Address:** 326 Commercial Street, Portland, Maine  
**Use:** Office  
**Local Code:** Block 41E Lot 2A Book 87A Page 2  
**MMN item number:** 86128