

Portland, Maine  
 Assessment 19 <sup>100</sup> ~~86~~ <sup>89</sup> ~~87~~ <sup>28</sup>  
 Name  
 Owner Boyce Annie A <sup>Sub. Club # 28</sup>  
 Street Peaks Island No. 28  
 Block 87-G <sup>87-6-7</sup> Lot 28  
 Use of Bldg. D Name  
 Tenants and Rooms 1-4  
 Rentals None  
 Age 20+  
 Condition of Repair Fair **613**

<b>Class</b>	<b>Exterior</b>	<b>Plumbing</b>
-Bungalow	Clapboards	Common <sup>10</sup>
Single House	Siding	Individual <sup>18</sup>
Two family	Shingles	Open <sup>20 H.V.</sup>
Three family	Stucco	Set tubs
Apartment	Paper	<b>Finish</b>
Store Building	Tapestry Brick	-Plain
Office "	Com. Brick	-Hardwood
Factory "	Galv. Iron	<b>Halls</b>
Storage "	Stone	Wood
Stables	Terra Cotta	Terrazzo
Garage, private	Concrete	Marble
Garage, public		<b>Roof - Roofing</b>
Theatre	<b>Heating</b>	-Shingle
Club House	-Stove	Slate
Cottage	Furnace	Gravel
	Hot Water	Prepared
<b>Foundation</b>	Steam	Asbestos
Brick	Light <sup>4.7</sup>	Flat
Stone	Oil	Hip
Concrete	Gas	Gable
-Pile	Electric	3 Dormers
<b>Basement</b>		<b>Windows</b>
Full	<b>Floor</b>	-Plain Glass
Cement Floor	-Common	Wire Glass
Waterproof	Hardwood	Shutters
<b>Construction</b>	Re-Concrete	<b>Miscellaneous</b>
-Frame	Concrete Slab	Elevator
Brick	Waterproof	Sprinkler
Tile	<b>Ceiling</b>	Fire Escape
Block's	Plaster	Refrigerator
Stucco	Metal	Vacuum Cleaner
Re-Concrete	Panelled <sup>3 sheeted</sup>	Safes and Vaults
Mill	Rough <sup>1/8 board</sup>	Telephone Equip.
Steel Frame		

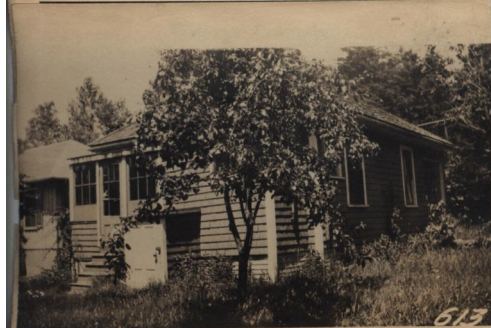
Ground Area ..... Height.....  
 Cubic Feet..... Unit.....cts.  
 Utility Dep. ....  
 Dep. .... Per cent.  
**Sound Value, \$** .....

Land 6000 Corner ..... Interior..... Alley  
 Front ..... Depth .....ft.

COMPUTATION  
 150  
 1100-1921 \$1000

Area	Multiplier	Coefficient

Year	Unit	Coefficient	Land Value
19			



Surveyed by .....  
 (Remarks on other Side)

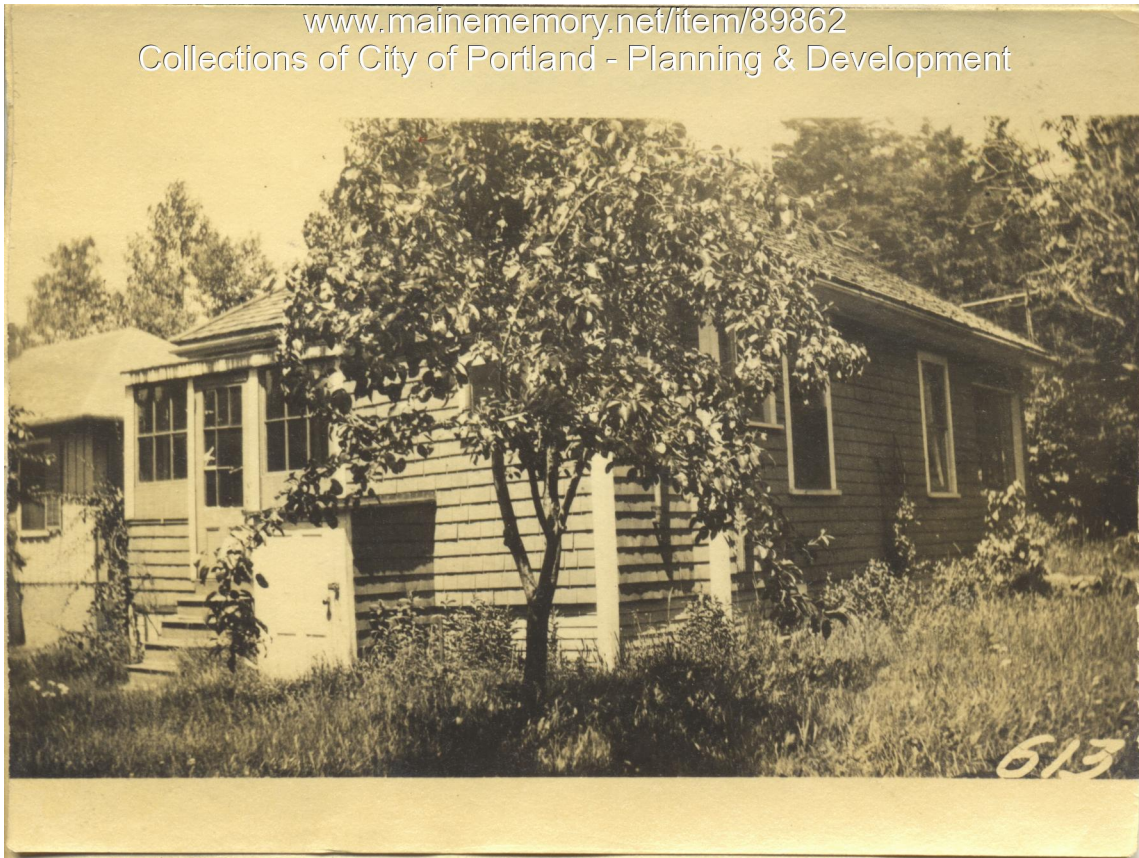
**Remarks about Buildings**

*Not shown on fire map*

**Remarks about Land**

**Remarks about Personal Property**

[www.mainememory.net/item/89862](http://www.mainememory.net/item/89862)  
Collections of City of Portland - Planning & Development



**Owner:** Alice M. Charleton  
**Address:** S. Side Central Avenue, Lot 28, Peaks Island, Portland, Maine  
**Use:** Summer Dwelling  
**Local Code:** Block 87G Lot 7 Book 94 Page 1  
**MMN item number:** 89862